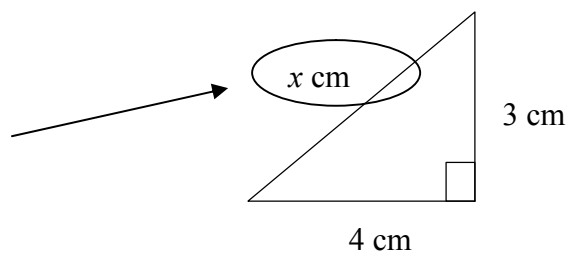


Question 1

Find x in the triangle below.

Solution

Here it is



Question 2

Simplify $\frac{1}{n} \sin x$

Solution

$$\frac{1}{n} \sin x = \text{six} = 6$$

Question 3

Expand $(a+b)^n$

Solution

$$\begin{aligned}(a+b)^n &= (a + b)^n \\ &= (a + b)^n \\ &= (a + b)^n \\ &= (a + b)^n\end{aligned}$$

Question 4

After explaining to a student through various lessons and examples that

$$\lim_{x \rightarrow 8} \frac{1}{x-8} = \infty$$

the teacher asked what $\lim_{x \rightarrow 5} \frac{1}{x-5}$ was and obtained the answer ∞

Question 5

Question: If a car travels 60km in 1 hour how many kilometres does it travel in 2 and a half hours?

Answer: 12 and a half miles!

Hmmmm.

Question 6

To park in a car park it costs £3 for the first hour and £1.50 per hour for following hours. How much does it cost to park for 5 hours?

Answer: £1050.

I wonder where this candidate was used to parking!